

SH Silent Products



Thin. Efficient. Master Mid-Low Frequencies.



SHe emulsion

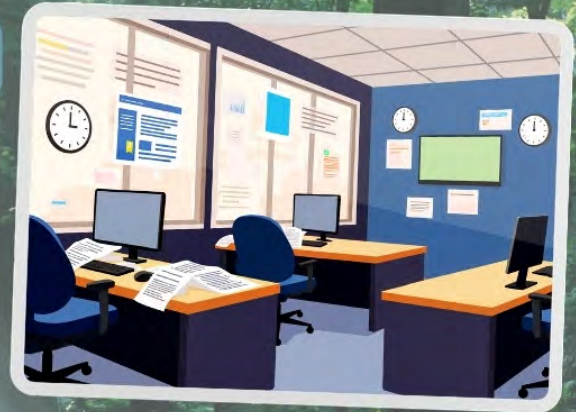


SHm membrane



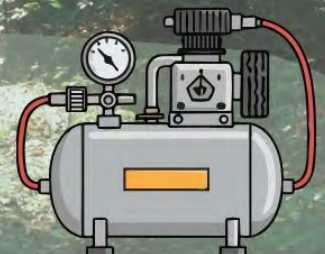
Product Characteristics

1. Temperature Cycling & Thermal Shock: Pass (-40°C to 80°C)
2. Vertical Burn Rate: 0 (Non-flammable)
3. Eco-Friendly: Water-based product with ultra-low VOC (0-1%)



Application Fields

1. Automotive :
Body panels, Chassis, Wheel arches, and Trunks.
2. Construction :
Partition panels (Sandwich panels), Gypsum boards, and Calcium silicate boards.
3. Equipment & Machinery :
Home appliances, Air compressors, and Generators.





SHh High - gloss Paint

SHi Heat & Sound Insulating Paint



Eco-friendly, Energy-saving, Rust-proof, and Noise-reducing for a more comfortable life !



Certified Green Building Material Standard

Solar Reflectance (SR) = 81.58% > 70%

Solar Reflectance Index (SRI) = 102 > 80

Surface Emissivity = 0.929



Sunny Days: Temperature Reduction



Rainy Days: Sound Insulation



- Tel : 886-4-23587676
- E-mail : greco@grecoresin.com
- Add. : No. 35, 34th Road, Industrial Park, Taichung 40768, Taiwan
- Website : www.grecoresin.com



LEARN MORE